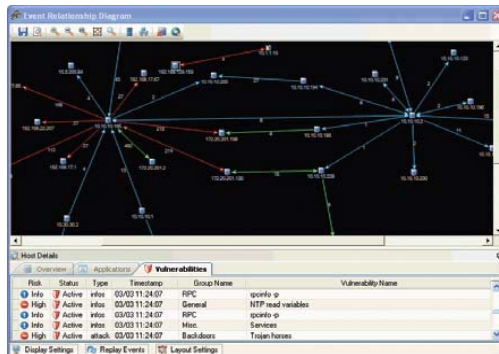


Activeworx Enterprise (AE)

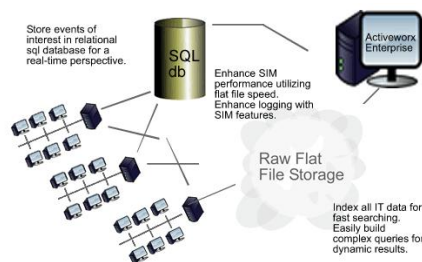
a unified security information and log management platform



- **Activeworx Enterprise's SIEM component allows organizations to:**
 - generate vital security alerts
 - create detailed investigatory or compliance reports from hundreds of on-board reports
 - create complex rules for a greater understanding of security posture
 - correlate events quickly
 - view real-time event collection to enhance real-time performance in a threat situation
- **Use historical raw data to:**
 - satisfy compliance requirements
 - dig deep to assess exposure
 - perform dynamic queries
 - apply high-level searches
 - generate detailed compliance reports

Activeworx Enterprise (AE) is a unified security information and log management platform. Activeworx Enterprise incorporates full log management capabilities for every event that occurs on a network and/or system while leveraging the real-time, forensic, and reporting benefits of a powerful security information event management (SIEM) feature set. Enhanced security and log management control enables users and operators to maintain a consistent, in-depth picture of the corporate network and the events impacting it.

Leverage high-speed raw log collection to enhance SIEM performance, and apply powerful SIEM functionality to historical data. All in one unified solution.



Activeworx Enterprise 5 enthält vollständige Log-Management-Funktionen für Ereignisse, die im Netzwerk und/oder System auftreten. Zusätzlich steht eine übergreifende Integration mit dem Sicherheits-Informationen und Event-Management (SIEM)-System zum Verfügung.

Features and Benefits

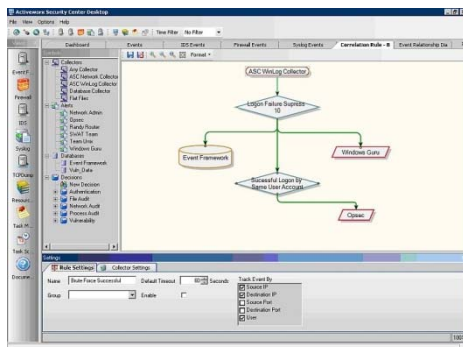
TECHNICAL SUPPORT

24 Stunden technischer Support durch Knowledgebase des Herstellers.

Telefonischer technischer Support während der Geschäftszeiten oder per E-Mail an:
support@activesphere.net

ZERO DOWNTIME

Ständige Verfügbarkeit des Supports durch ein weltweites Partnernetzwerk in über 40 verschiedenen Ländern geben telefonisch und per E-Mail Unterstützung in der Landessprache



Enhance Security

Protect your assets with comprehensive, real time expert security information analysis integrated with the enhanced forensic understanding achieved by capturing all network data for storage

Easy Compliance Reporting

quickly generate comprehensive reports for investigative or regulatory compliance purposes. Rich graphical reports detail the overall security posture of your organization, provide historical reporting and are customizable to meet your specific and future needs. AE includes over 200 reports for Sarbanes-Oxley, HIPAA, PCI, GLBA and more

Save Money

AE's modular design allows you to add functions as your needs grow. Pay for exactly what you need and diminish the Total Cost of Ownership over the life of the product. Free evaluations are available and technically supported.

Powerful Correlation Capabilities

The ActiveWorx Enterprise (AE) correlation engine applies intelligent automation to security information. Create complex correlation rules with an easy, flow-chart based rule creator that analyzes threat data to create real-time alerts if appropriate or disregard if the network is not vulnerable

Detailed Alerting

Knowing when an event has occurred is imperative to security administrators. AE provides rules-based alerting through several standardized protocols, such as e-mail and Syslog

Comprehensive Reporting

AE includes a built-in Report Center to provide intelligence on incidents of interest along with compliance reports. AE comes bundled with over 200 compliance reports and tasks for GLBA, SOX, HIPAA, FISMA and PCI. Reports are easily customizable for individual preferences or company rules

Raw Audit Logging

Raw audit logging and log management of ALL events generated by virtually any computer or device on your network. The high performance logging engine is capable of logging and indexing over 50,000 EPS sustained. AE logs directly to flat files with querying capabilities. Full data retention capabilities for statutory compliance acts such as HIPAA and GLBA, as well as requirements for Payment Card Industry regulations are provided

User Management

ActiveWorx Enterprise's user management system allows for granular management of permissions. Easily add users or groups, detail permissions, authenticate via Active Directory, Radius, or a local user account, log user changes, and role-based access control of data and configuration areas

Customizable Dashboards

The AE event dashboards are completely customizable. Users have the ability to choose from over 50 different panels to display information and save multiple layouts. Many different charts and graphs to visualize information are provided. Each interactive view has the ability to drill down and view the events, perform search correlations, run custom commands on context sensitive values, copy charts into a report and customize charts to better view data

Intensive Visualization

Interactive graphing and diagramming demonstrate the event-to-network relationship from a historical perspective. Upon display, events may be seen in multiple formats with variable graphing and customized reporting views